



The Family Support Services (FSS) Program aids households in Chemung, Steuben, and Schuyler Counties that have a family member who is developmentally disabled and living at home. The program promotes the physical and social well-being, education, and financial stability of individuals who have developmental disabilities by assisting them and their families in obtaining support and linkage to existing community resources and services.

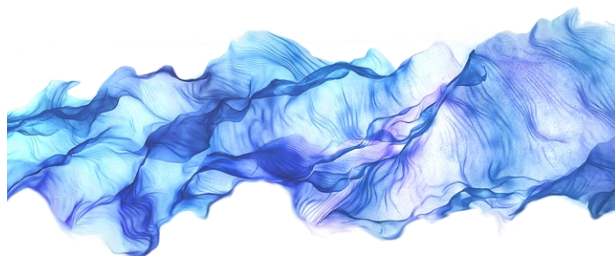
*Funding for Family Support Services provided by the Office for People With Developmental Disabilities (OPWDD). Funding for this project provided by the Community Foundation of Elmira-Corning and the Finger Lakes, Inc.*

## Family Support Services Sensory Room

### CONTACT:

Ariana Levi  
Family Support Services  
607-734-6174, extension 284  
alevi@cseop.org

Supervisor: Amanda Wylie  
607-734-6174, extension 267  
awylie@cseop.org



**Economic  
Opportunity  
Program, Inc.**

*Strengthening the fabric of our community*

650 Baldwin Street • Elmira NY 14901  
607-734-6174 • [www.cseop.org](http://www.cseop.org)

Child Care - Head Start / Early Head Start  
Energy Services Bureau/Weatherization  
Education/Career Services  
Family Development  
Youth Care



**Economic  
Opportunity  
Program, Inc.**  
*Strengthening the fabric of our community*

## *Family Support Services*



## *Sensory Room*



## What is a Sensory Room?

A Multi Sensory Environment is a dedicated space or room where sensory stimulation can be controlled (intensified or reduced), presented in isolation or combination, packaged for active or passive interaction, and matched to fit the perceived motivation, interests, leisure, relaxation, therapeutic and/or educational needs of the user.

These rooms are specifically designed environments which give users the opportunity to completely relax or access a wide range of sensory experiences for therapy, learning, or fun.

## Who can use this room?

The Family Support Services Sensory Room is open to the general public, a scheduled appointment is advised, but drop-ins are welcome.

This room can be used by people of all ages and abilities for relaxation, focused work, stimulation, therapy, and/or stress release. At times, it could be used for specific work, such as a teaching tool for children with additional needs.

All participants must sign a usage waiver before utilizing the room. Community providers using the room for Physical and/or Occupational Therapy, must provide proof of licensure and insurance. Copies of Insurance will need to be sent to Ariana Levi or Amanda Wylie at (607) 733-8126.

## Scheduling the Sensory Room:

By phone:

EOP Main Office (607-734-6174)

By email:

Ariana Levi (alevi@cseop.org)  
-or- Amanda Wylie (awylie@cseop.org)

Families can choose the length of use - up to one (1) hour.

## Sensory Room Fees:

- First time visit is FREE of charge.
- All payments must be made during normal business hours.
- Punch cards: 5 visits for \$20 or 10 visits for \$35
- Drop-in Fees: \$5 per visit. This will amount to one voucher for the service.
- Community Partners and organizations will be able to pay a monthly rate of \$100/month to use the space.

**\*\*If a family is experiencing financial hardship, special consideration is available.**

